

Philippe

by Philippe Chow

UPTOWN

33 East 60th Street
(Between Park & Madison Avenues)
New York, NY 10065
philippechow.com

Event Spaces

OUTDOORS

3 Areas, (1 Heated & Covered)
20 to 100 Guests

INDOORS

3 Floors, 6 Rooms
20 to 207 Guests

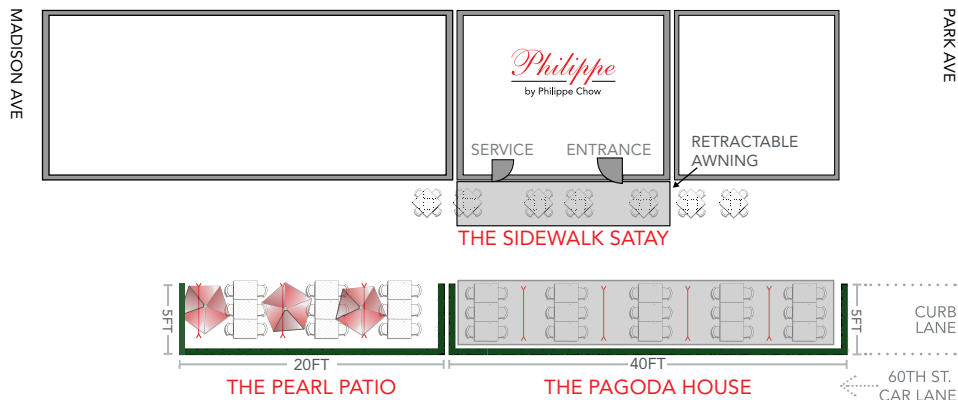
PHOTOS

See Next Page



PHILIPPE CHOW UPTOWN

33 East 60th Street, New York, NY 10065
(Between Park & Madison Avenues)



Outdoor Dining

Buyout 100 Guests,
3 Areas, Street Level

	Seat	Board	Stand
Pagoda House	42	20	50
Pearl Patio	18	14	30
Sidewalk Satay	28	12	20
Entire Outside	88	xx	100



THE PAGODA HOUSE | EXTERIOR

The Pagoda House is a semi-private outdoor space that offers an authentic and formal Philippe Chow fine dining experience. It is professionally constructed, with a floor, 3 walls and a roof. It is outfitted with plexiglass dividers, overhead heat lamps, interior lighting, fans, foliage, and ambient music. Guests are protected from most inclement weather conditions.



THE PAGODA HOUSE | INTERIOR



THE PEARL PATIO

The Pearl Patio is a semi-private outdoor space that offers a vibrant and luxurious al fresco Philippe fine dining experience. It is designed to invoke a resort feel with a row of expansive umbrellas, foliage and plexiglass dividers. Guests are protected from the sun and light rain.



THE SIDEWALK SATAY

The Sidewalk Satay is a collection of outdoor fine dining tables that offer guests the ultimate in people watching while enjoying the Philippe Chow experience. In the spring/summer a retractable awning protects guests from the sun and light rain. During the winter, tables are enclosed within individual glass houses to protect against inclement weather.

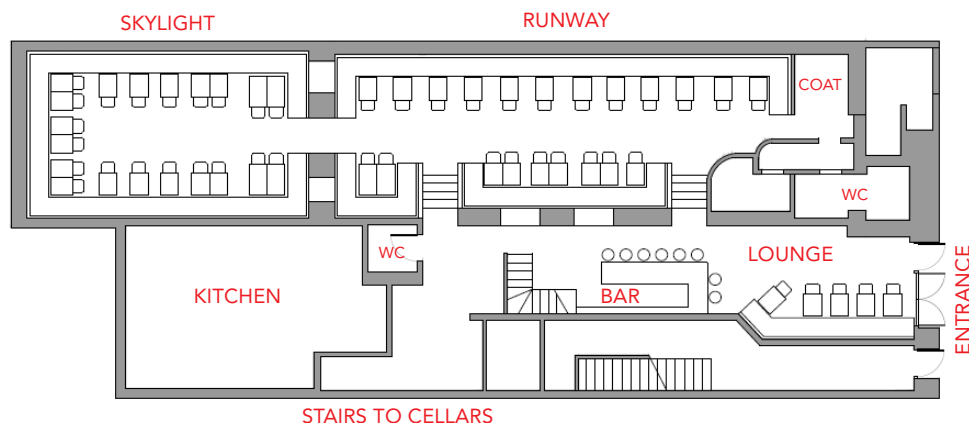


PHILIPPE CHOW UPTOWN

33 East 60th Street, New York, NY 10065
(Between Park & Madison Avenues)

Indoor Dining

Buyout 207 Guests,
6 Rooms, 3 Floors

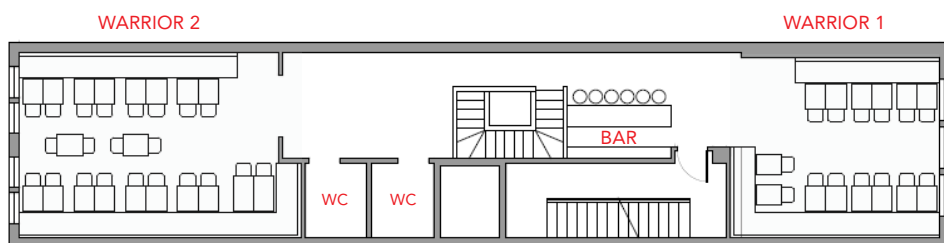


First Floor

	Seat	Board	Stand
Runway	60	32	70
Skylight	52	22	55
Entire Floor	112	xx	125

Audio Visual

WiFi & Surround Sound

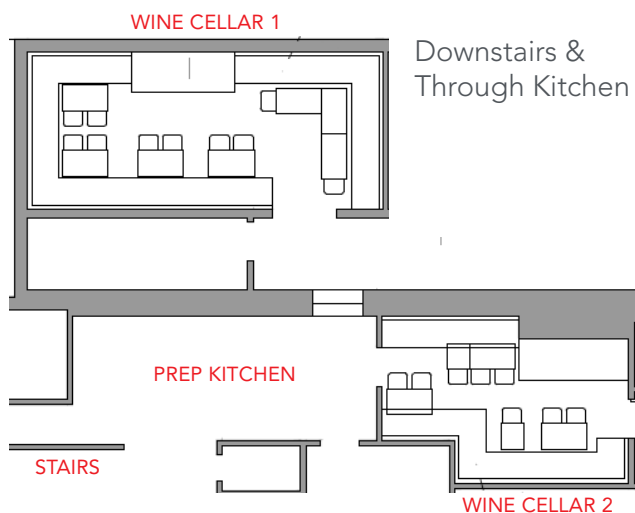


Second Floor

	Seat	Board	Stand
Warrior 1	25	16	30
Warrior 2	45	22	50
Entire Floor	70	xx	80

Audio Visual

55" 4k TV's (in each room)
Apple TV Airplay
Mac's or iPads/iPhones to the TV.
HDMI connection & Cable TV
WiFi & Surround Sound



Cellars

	Seat	Board	Stand
Wine Cellar 1	20	18	8
Wine Cellar 2	22	12	25
Both Cellars	42	xx	33

Audio Visual

42" 4k TV's (in each room)
Cable TV
iPod Dock and WiFi



PHILIPPE CHOW UPTOWN



SKYLIGHT



RUNWAY

FIRST FLOOR – Ultra-Glamorous dining can be found on our first floor in the Skylight and Runway rooms. Vaulted ceilings and inspirational skylight sets the tone for a very special evening. The Skylight room is separated from the Runway room by a small hallway with no door. If combined, your event will gain an impressive entrance and overall set up that will easily showcase a reception and/or seated service. There is a coat check and bathrooms located within the Runway room providing a self-contained environment for your guests. **Entire First Floor Buyouts to make the Skylight Room 100% private when combined with the Runway room are considered on a case by case basis.**



WARRIOR 1



WARRIOR 2

SECOND FLOOR – Located on the second floor of Philippe are two private dining rooms, Warrior 1 and Warrior 2. Each of these separate private dining rooms have sliding doors, carpeting, individual televisions and are located on opposite sides of the floor which ensures privacy if two events are going on at once. **The second floor also hosts a beautiful bar, two bathrooms and is available for buyouts.** Please consider that your guests must be able to navigate a flight of 15 stairs to get to our second floor.



WINE CELLAR 1



WINE CELLAR 2

CELLARS – For those seeking something very unique, exclusive and secluded, Philippe offers two intimate private dining rooms in our wine cellars located a flight downstairs from the main dining room. Wine Cellar 1 and Wine Cellar 2 are similar in their speakeasy décor with exposed brick and wine bottles lining the walls. Built in leather banquettes allow for comfy seating complimented by regular chairs and both rooms are fully equipped with Wi-Fi and entertainment systems perfect for viewing parties. **All guests must be able to navigate a flight of back kitchen stairs and walk through a lively prep kitchen. This is not a traditional entrance and/or location of private dining rooms and can only be fully understood with an onsite tour.**